

THIS PRINT IS THE PROPRIETARY PROPERTY OF
TOWER TECH USA AND SHALL
NOT BE REPRODUCED OR COPIED WITHOUT THE
WRITTEN PERMISSION OF TOWER TECH USA.

TOWER TECH

Sustainable Efficiency

TELEPHONE:

(405) 979 - 2100

FAX:

(405) 979 - 2131

EMAIL:

cad@towertechusa.com

WEBSITE:

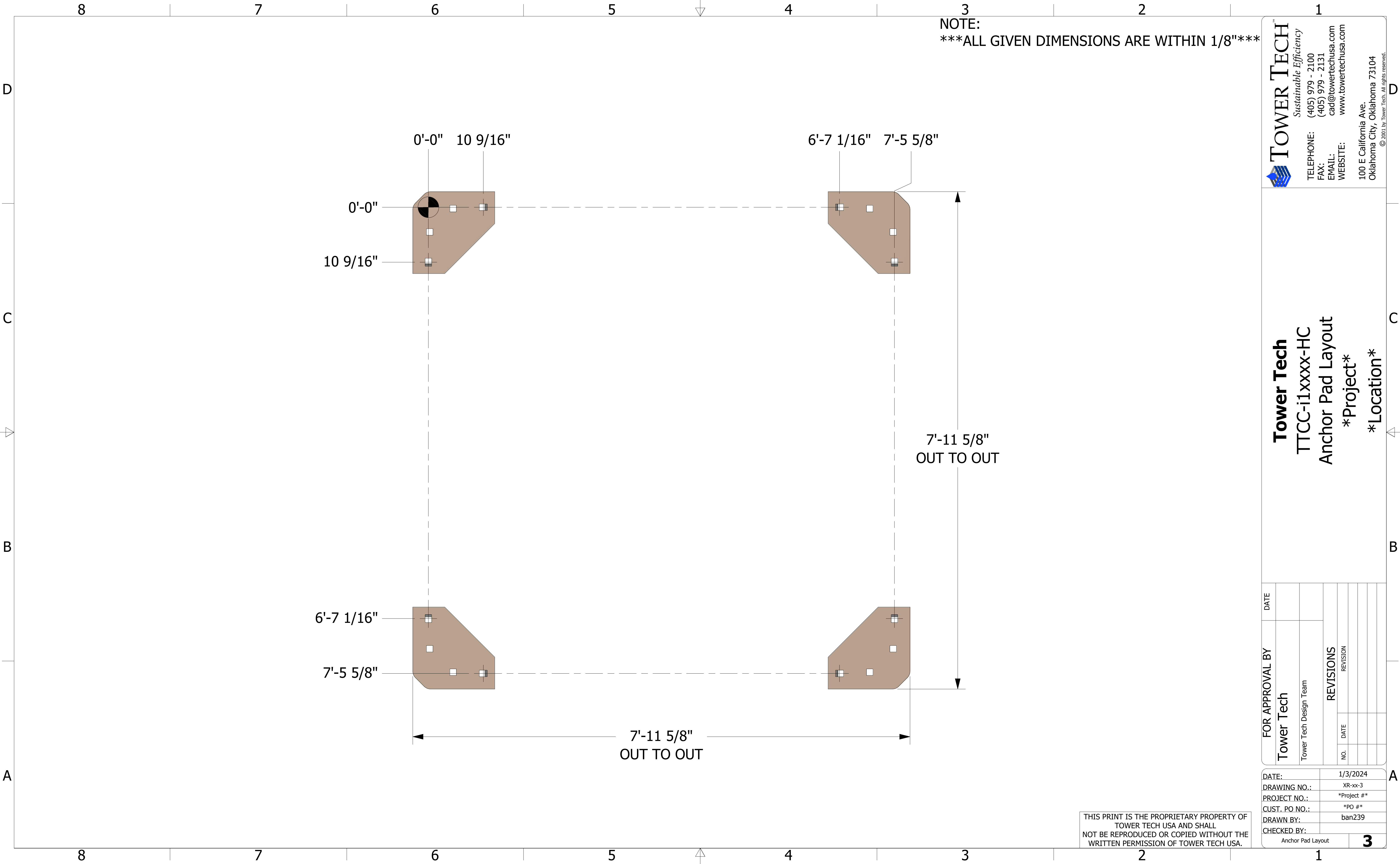
www.towertechusa.com

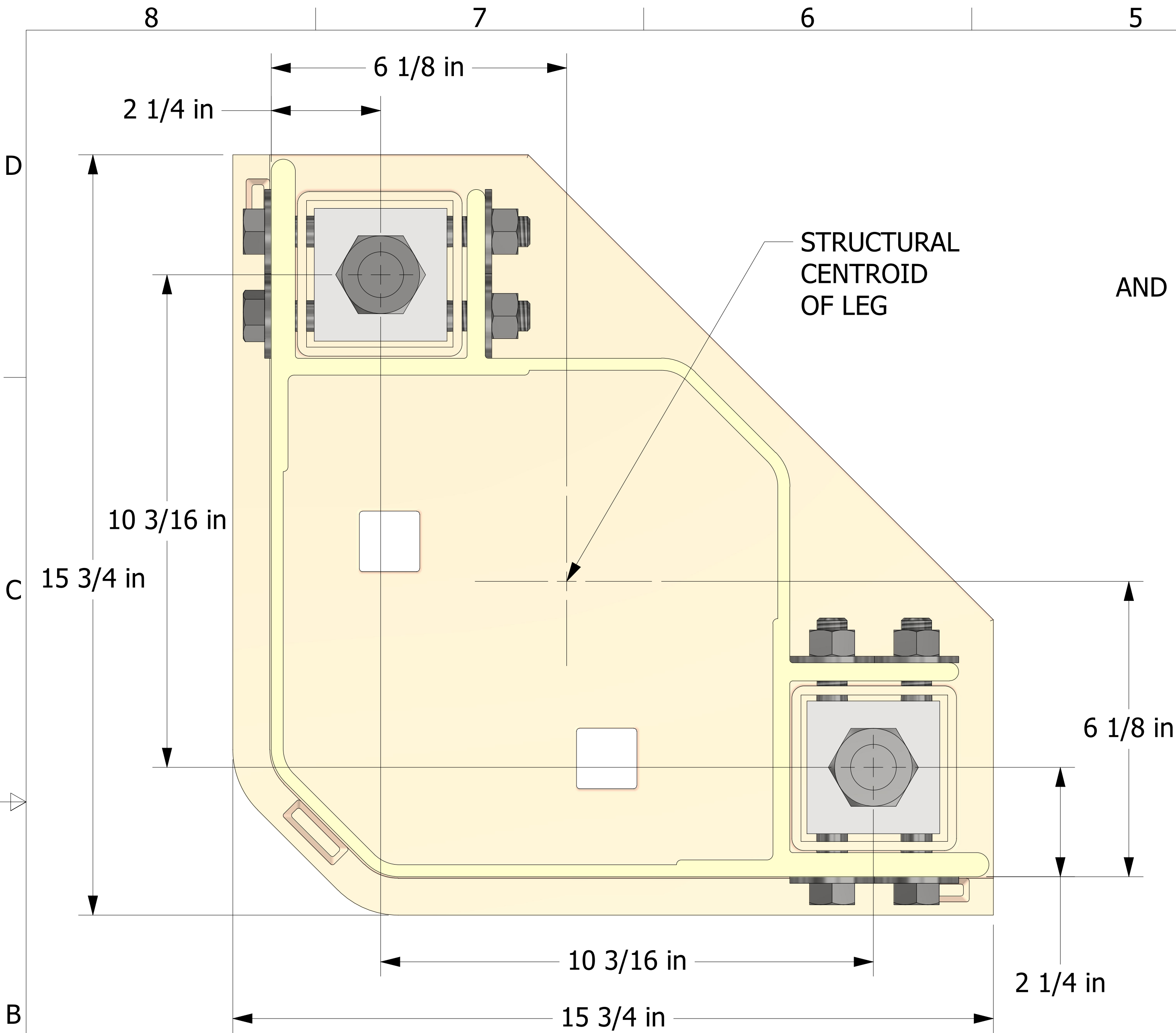
100 E California Ave.

Oklaoma City, Oklaoma 73104

TOWER TECH
TTCC-i1xxxx-HC
Plan and Elevation
Project
Location

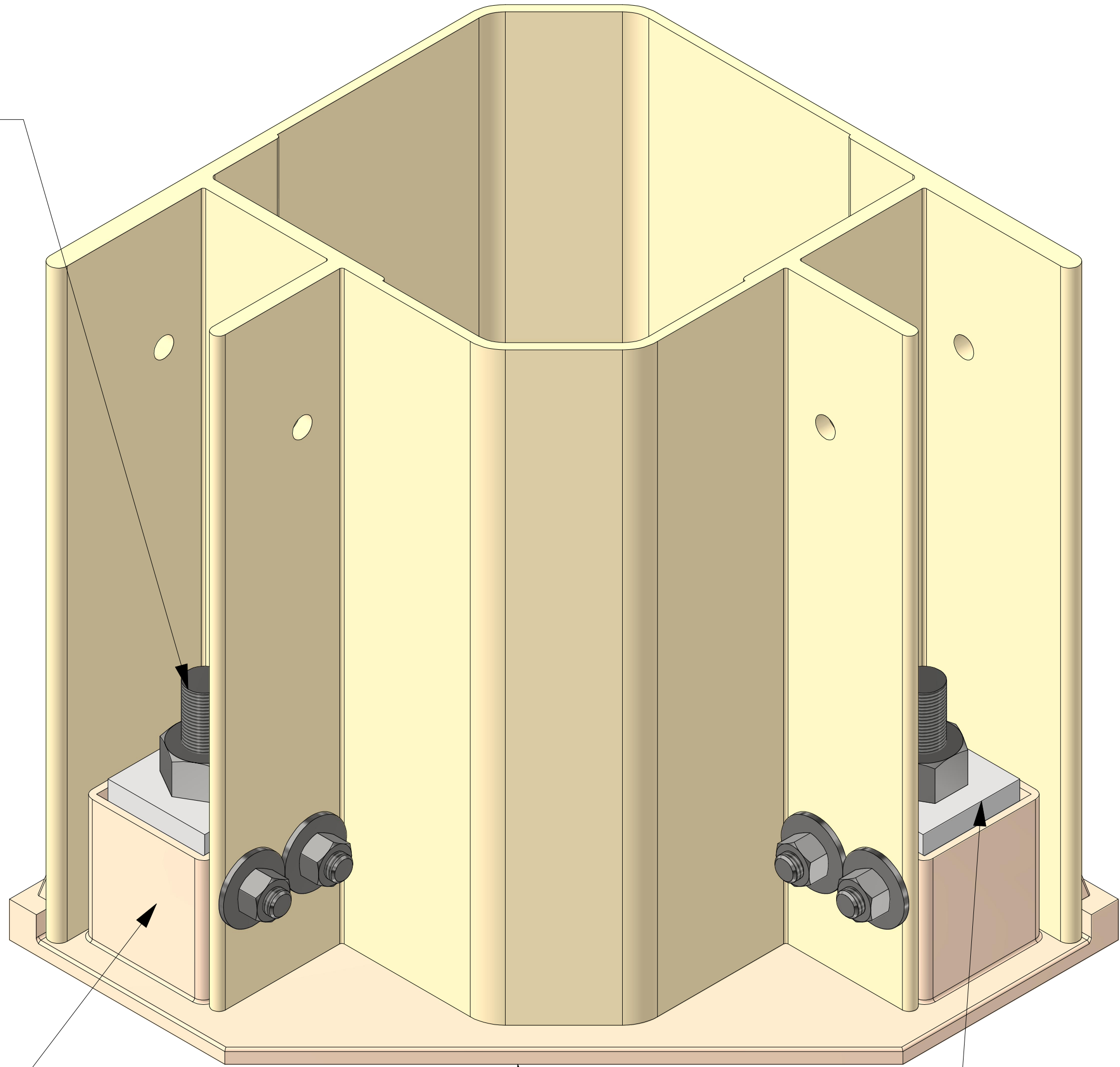
FOR APPROVAL BY		DATE							
TOWER TECH									
Tower Tech Design Team									
REVISIONS									
NO.	DATE	REVISION							
DATE:		1/31/2024							
DRAWING NO.:		TTCC-i1							
PROJECT NO.:		*Project #*							
CUST. PO NO.:		*PO #*							
DRAWN BY:		SJC235							
CHECKED BY:									
Plan and Elevation						2			





LEG GEOMETRIC PROPERTIES	
AREA:	17.9141
PERIMETER:	107.9072
BOUNDING BOX:	X:- 6.1274-- 8.7476 Y:- 6.1274-- 8.7476
CENTROID:	X: 0.0000 Y: 0.0000
MOMENTS OF INERTIA:	X: 422.8851 Y: 422.8847
PRODUCT OF INERTIA:	XY:- 229.38880
RADII OF GYRATION:	X:48586 Y:48586
PRINCIPAL MOMENTS AND X-Y DIRECTIONS ABOUT CENTROID:	I: 193.4960 ALONG [0.7071 - 0.7071] J: 652.2729 ALONG [0.7071 - 0.7071]

FILL POCKET AROUND ANCHOR BOLTS TO TOP OF LEG BOLTS WITH NON-SHRINK GROUT, BEFORE INSTALLING THE SQUARE WASHER PROVIDED WITH THE MODULE. BEFORE THE GROUT SETS INSTALL SQUARE WASHER AND ANCHOR NUT AND TORQUE TO 50 FT.-LBS. SQUARE WASHER SHOULD ENGAGE ON TOP OF THE TWO HORIZONTAL BOLTS SECURING THE FOOTPAD TO THE LEG. RE-TORQUE TO STRUCTURAL ENGINEERS SPECIFICATION AFTER GROUT HAS SET.



SQUARE WASHER PROVIDED BY TOWER TECH

CONCRETE SLAB OR OTHER MOUNTING STRUCTURE BY OTHERS

Tower Tech
TTCC-i1xxx-HC
Footpad Detail
Project
Location

FOR APPROVAL BY	DATE	REVISIONS	NO.	DATE
Tower Tech	Tower Tech Design Team			

DATE:	2/2/2021
DRAWING NO.:	XR-xx-4
PROJECT NO.:	*Project #*
CUST. PO NO.:	*PO #*
DRAWN BY:	sjc235
CHECKED BY:	
Footpad Detail	

THIS PRINT IS THE PROPRIETARY PROPERTY OF TOWER TECH USA AND SHALL NOT BE REPRODUCED OR COPIED WITHOUT THE WRITTEN PERMISSION OF TOWER TECH USA.